

**Søknad endring anlegg konfigurasjon med GPS koordinater ramme, flåter og anker punkter lokalitet 31297 Gammelveggen Narvik kommune 2017**

**Hjorne koordinater ytterpunkter anlegg merket røde**

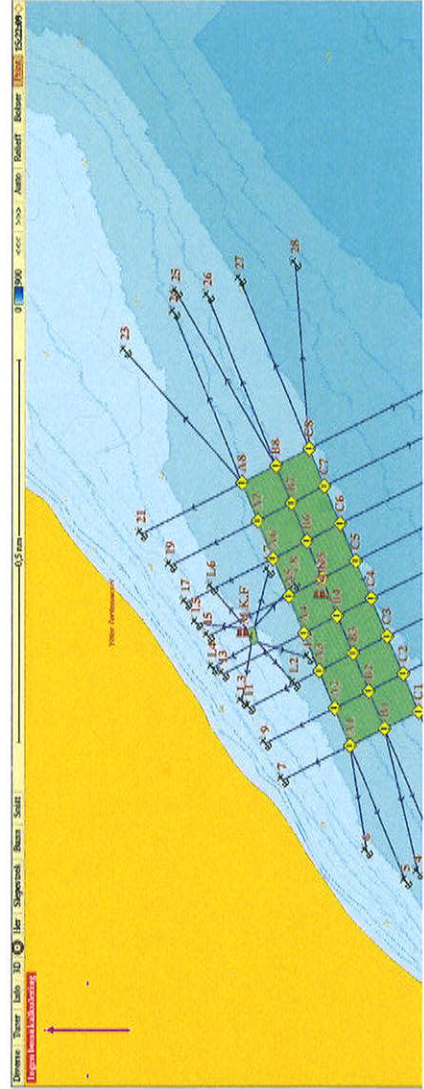
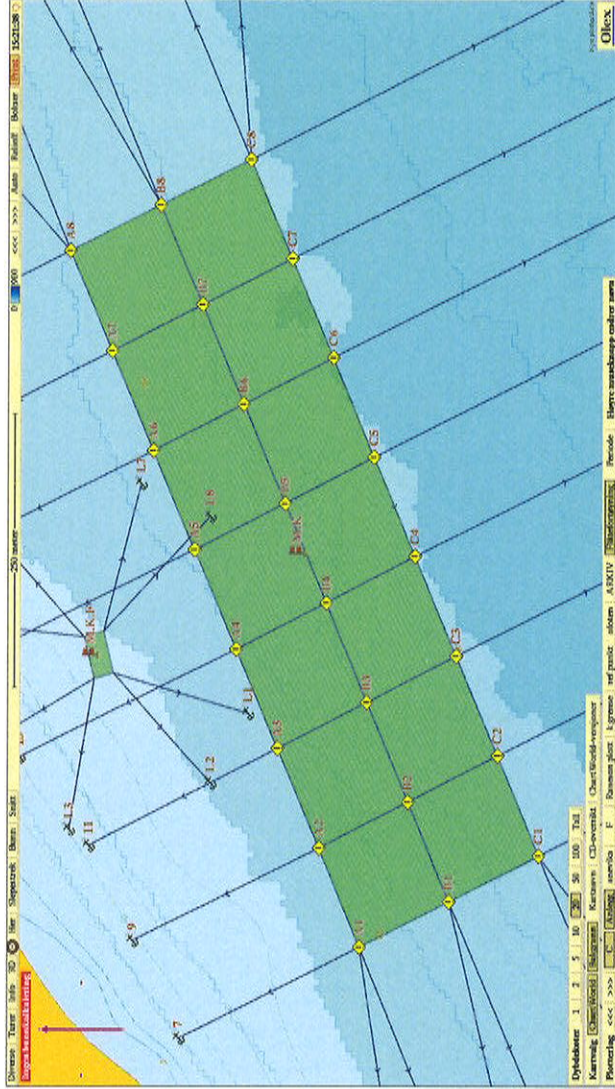
A1	68°29.125 N	17°19.791 Ø
A2	68°29.147 N	17°19.925 Ø
A3	68°29.170 N	17°20.058 Ø
A4	68°29.193 N	17°20.192 Ø
A5	68°29.215 N	17°20.325 Ø
A6	68°29.238 N	17°20.459 Ø
A7	68°29.260 N	17°20.592 Ø
A8	68°29.283 N	17°20.727 Ø
B1	68°29.076 N	17°19.852 Ø
B2	68°29.099 N	17°19.986 Ø
B3	68°29.121 N	17°20.120 Ø
B4	68°29.144 N	17°20.254 Ø
B5	68°29.166 N	17°20.387 Ø
B6	68°29.189 N	17°20.521 Ø
B7	68°29.211 N	17°20.654 Ø
B8	68°29.234 N	17°20.788 Ø

C1	68°29.027 N	17°19.914 Ø
C2	68°29.050 N	17°20.048 Ø
C3	68°29.072 N	17°20.182 Ø
C4	68°29.095 N	17°20.316 Ø
C5	68°29.117 N	17°20.449 Ø
C6	68°29.140 N	17°20.583 Ø
C7	68°29.162 N	17°20.716 Ø
C8	68°29.185 N	17°20.850 Ø

Målekoordinat anlegg:	68°29.155 N	17°20.320 Ø
-----------------------	-------------	-------------

**Anker koordinater på anker-posisjon anleggs fordybninger**

Anker-line 1	68°28.902	17°19.507
Anker-line 2	68°28.945	17°19.433
Anker-line 3	68°28.994	17°19.371
Anker-line 4	68°29.027	17°19.339
Anker-line 5	68°29.045	17°19.307
Anker-line 6	68°29.102	17°19.414
Anker-line 7	68°29.223	17°19.669
Anker-line 8	68°28.782	17°20.220
Anker-line 9	68°29.249	17°19.801
Anker-line 10	68°28.803	17°20.350
Anker-line 11	68°29.273	17°19.928
Anker-line 12	68°28.926	17°20.483
Anker-line 13	68°29.311	17°20.047
Anker-line 14	68°28.849	17°20.619
Anker-line 15	68°29.333	17°20.181
Anker-line 16	68°28.871	17°20.753
Anker-line 17	68°29.366	17°20.301
Anker-line 18	68°28.894	17°20.894
Anker-line 19	68°29.388	17°20.434
Anker-line 20	68°28.916	17°21.018



Anker-line 21 68°29.430  
 Anker-line 22 17°21.157  
 Anker-line 23 68°29.454  
 Anker-line 24 17°21.332  
 Anker-line 25 68°29.380  
 Anker-line 26 17°21.408  
 Anker-line 27 68°29.334  
 Anker-line 28 17°21.392  
 17°21.453  
 17°21.509

**Anker koordinater for flåde**

Minikontainer flåde  
 68°29.267 N  
 17°20.184 Ø

Anker-line L1 68°29.186  
 Anker-line L2 68°29.206  
 Anker-line L3 68°29.283  
 Anker-line L4 68°29.327  
 Anker-line L5 68°29.351  
 Anker-line L6 68°29.328  
 Anker-line L7 68°29.244  
 Anker-line L8 68°29.207

Steigen 07.07.2017  
 Cermag Nordland  
 Frode Holmvåg

