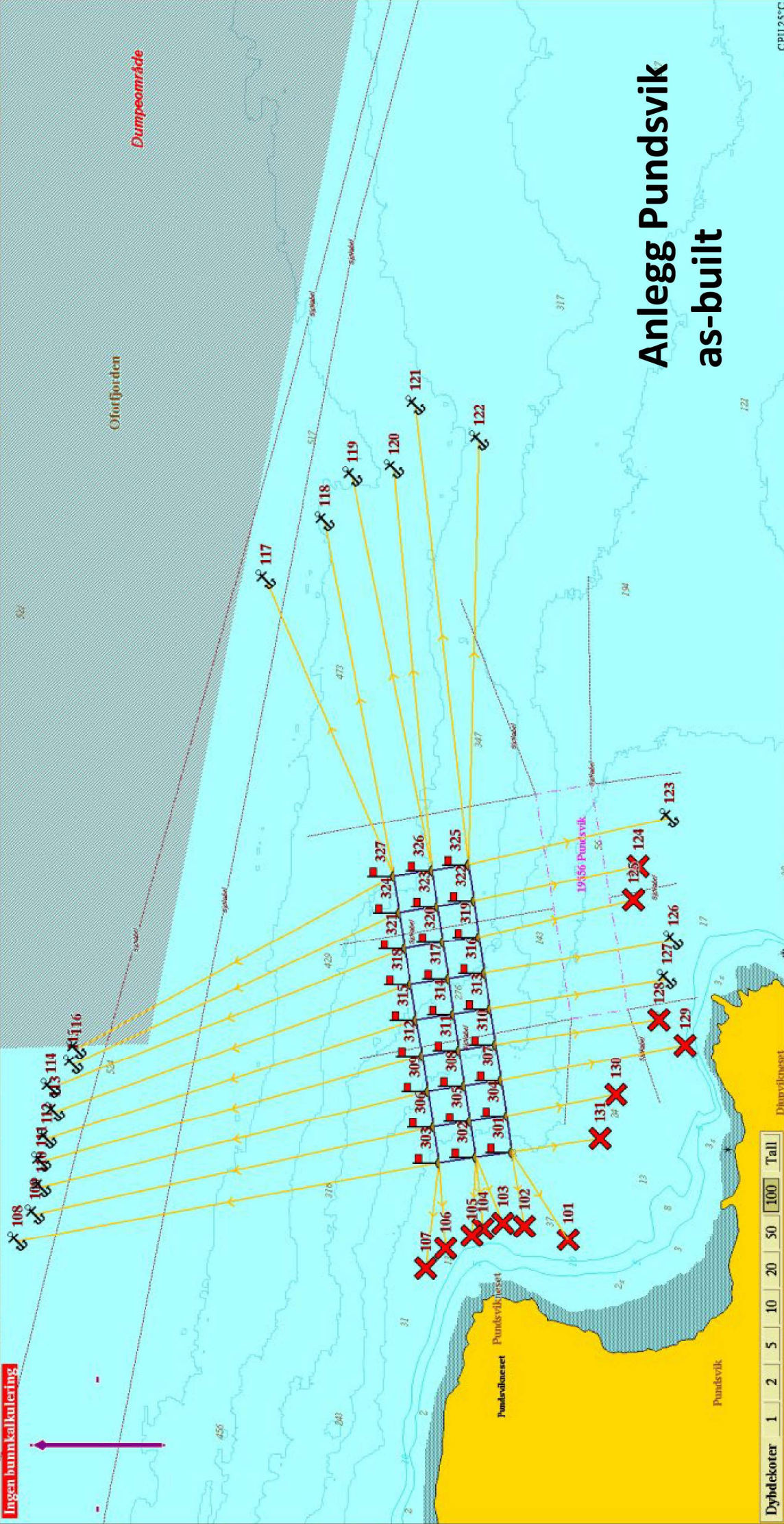


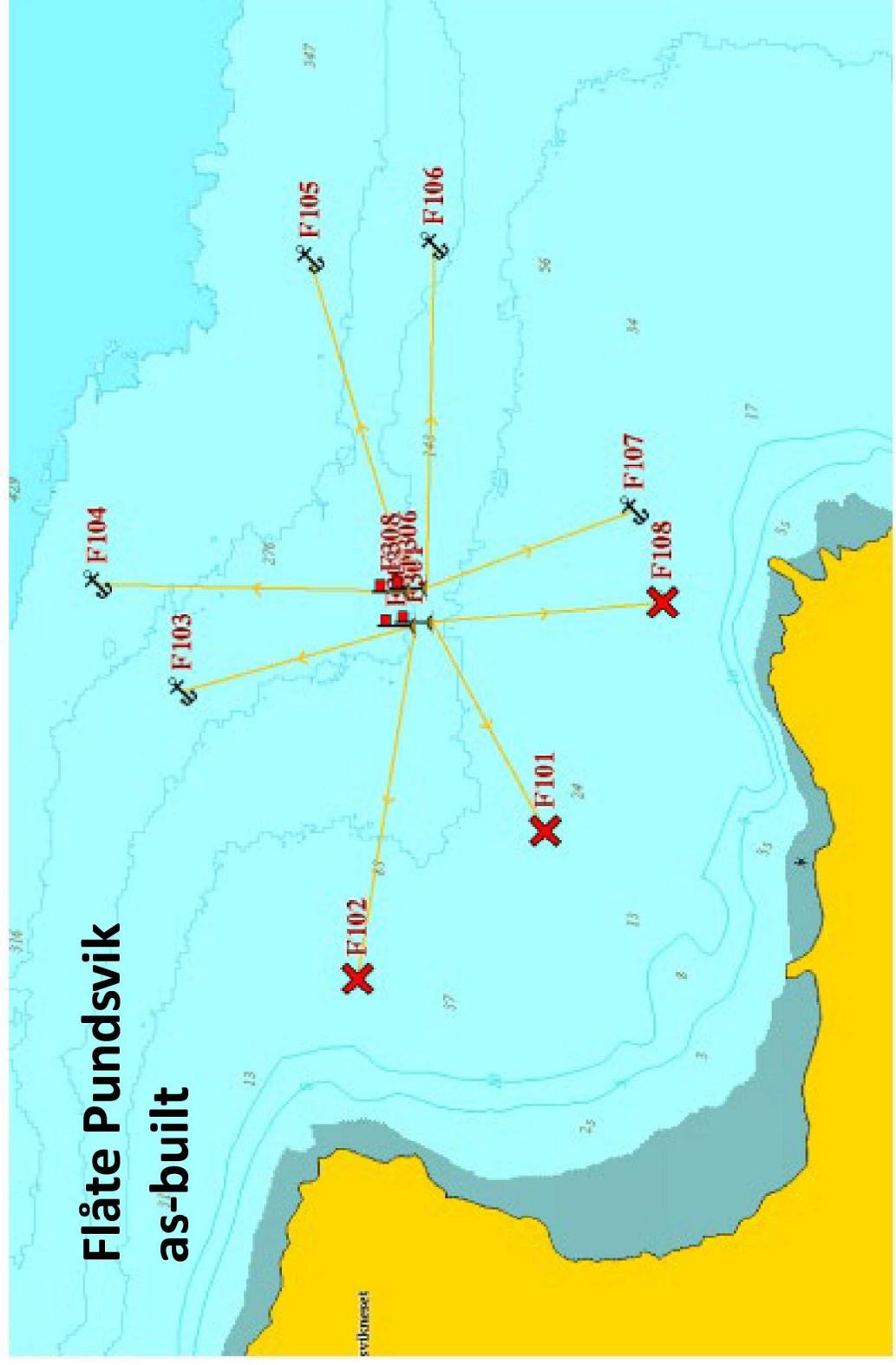
Ingen bunnkalkulering



# Anlegg Pundsvik as-built

68°25.072 N - 16°46.087 Ø		101
68°25.138 N - 16°46.140 Ø		102
68°25.171 N - 16°46.153 Ø		103
68°25.201 N - 16°46.132 Ø		104
68°25.218 N - 16°46.102 Ø		105
68°25.258 N - 16°46.051 Ø		106
68°25.288 N - 16°45.966 Ø		107
68°25.906 N - 16°46.078 Ø		108
68°25.879 N - 16°46.189 Ø		109
68°25.870 N - 16°46.300 Ø		110
68°25.861 N - 16°46.503 Ø		112
68°25.849 N - 16°46.612 Ø		113
68°25.855 N - 16°46.710 Ø		114
68°25.821 N - 16°46.809 Ø		115
68°25.816 N - 16°46.870 Ø		116
68°25.530 N - 16°48.808 Ø		117
68°25.440 N - 16°49.045 Ø		118
68°25.399 N - 16°49.231 Ø		119
68°25.336 N - 16°49.261 Ø		120
68°25.303 N - 16°49.524 Ø		121
68°25.206 N - 16°49.381 Ø		122
68°24.919 N - 16°47.826 Ø		123
68°24.966 N - 16°47.626 Ø		124
68°24.973 N - 16°47.488 Ø		125
68°24.913 N - 16°47.320 Ø		126
68°24.922 N - 16°47.161 Ø		127
68°24.934 N - 16°46.993 Ø		128
68°24.895 N - 16°46.887 Ø		129
68°25.000 N - 16°46.684 Ø		130
68°25.024 N - 16°46.500 Ø		131
68°25.157 N - 16°46.447 Ø	Hjørne SV	301
68°25.267 N - 16°46.404 Ø	Hjørne NV	303
68°25.223 N - 16°47.632 Ø	Hjørne SØ	325
68°25.336 N - 16°47.585 Ø	Hjørne NØ	327

# Flåte Pundsvik as-built



Line	GPS
F101	68°25.027 N - 16°46.522 Ø
F102	68°25.171 N - 16°46.212 Ø
F103	68°25.306 N - 16°46.816 Ø
F104	68°25.371 N - 16°47.041 Ø
F105	68°25.207 N - 16°47.722 Ø
F106	68°25.112 N - 16°47.751 Ø
F107	68°24.958 N - 16°47.194 Ø
F108	68°24.936 N - 16°47.002 Ø
Hjørne	68°25.114 N - 16°46.960 Ø
Hjørne	68°25.127 N - 16°46.954 Ø
Hjørne	68°25.131 N - 16°47.026 Ø
Hjørne	68°25.118 N - 16°47.032 Ø